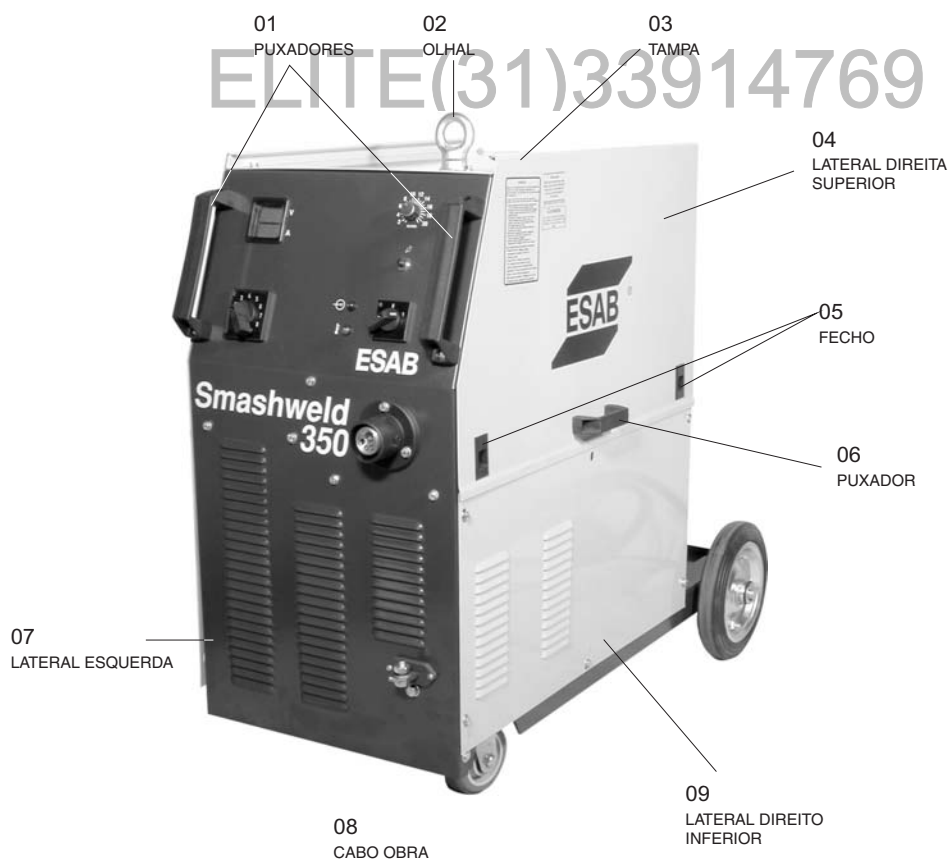


10) PEÇAS DE REPOSIÇÃO

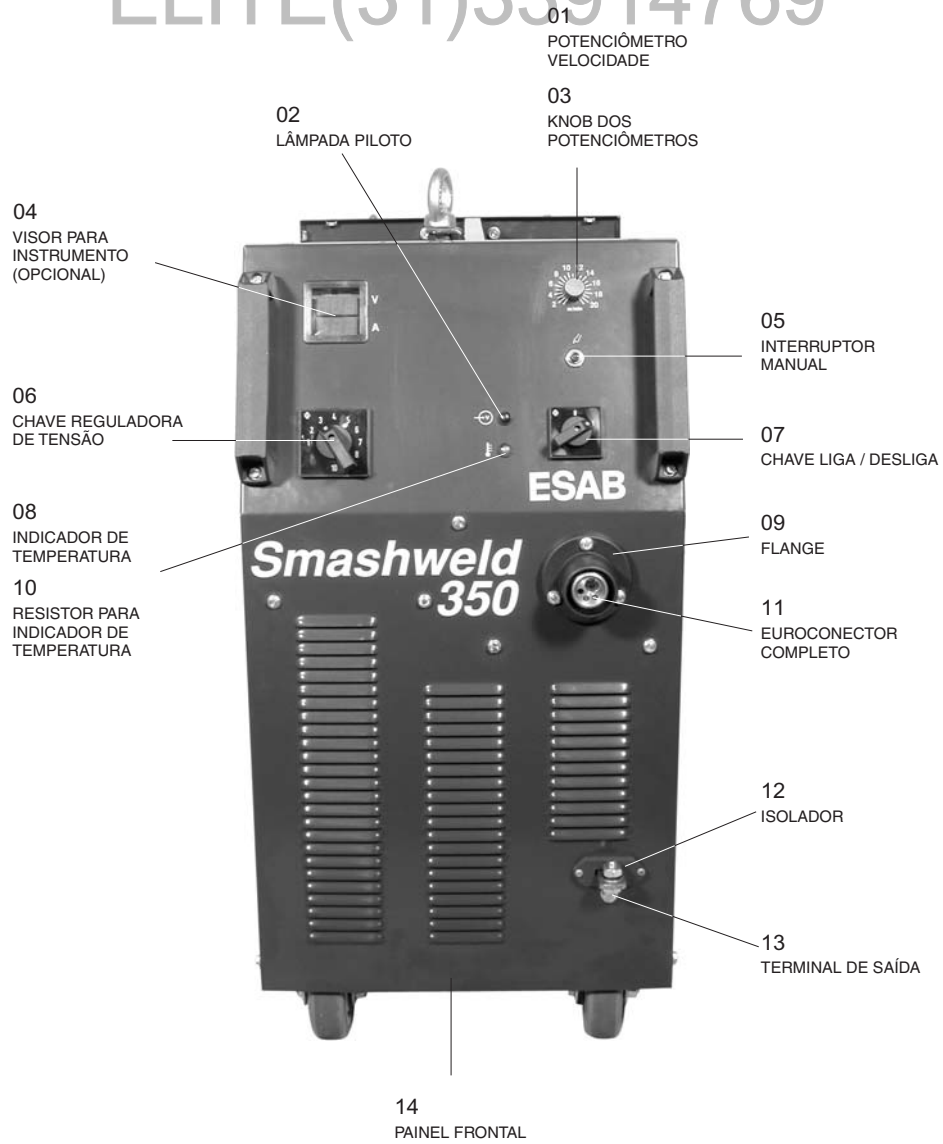
10.1) Smashweld 350 e Smashweld 350 Topflex



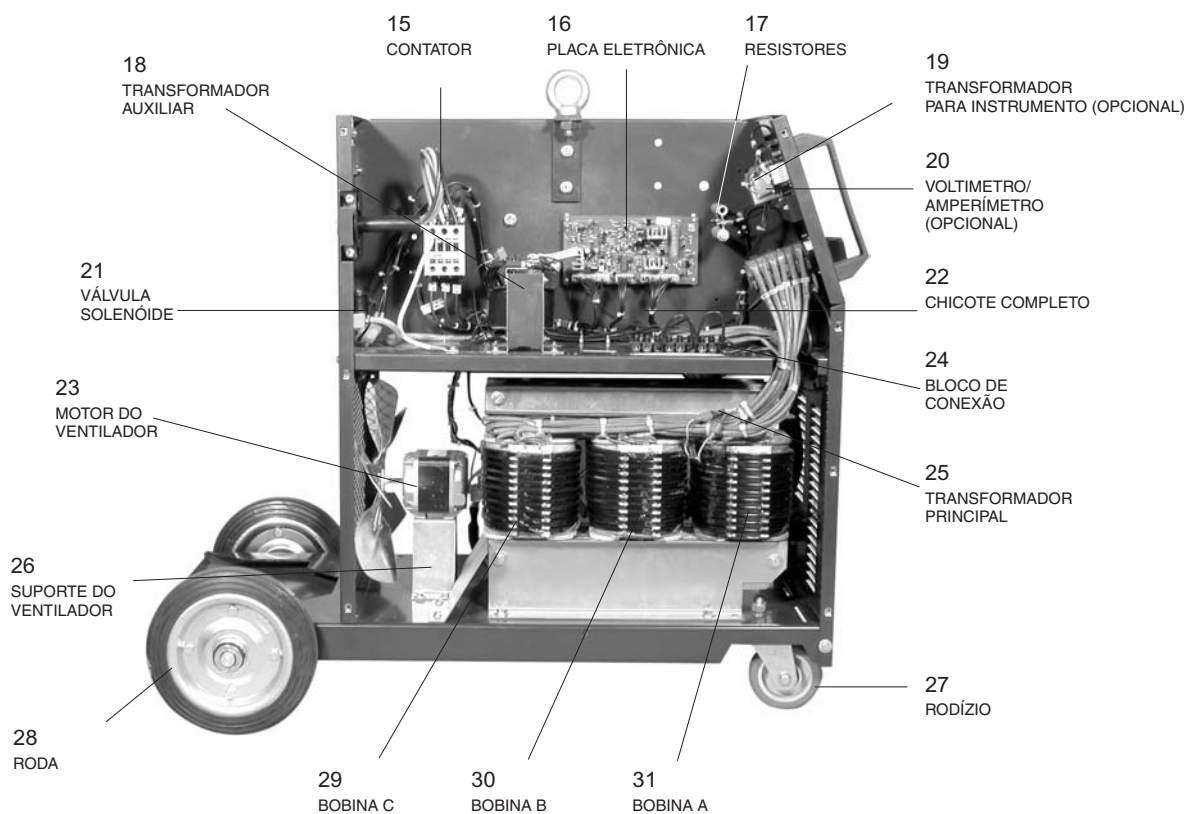
DESENHO A

10.2) Smashweld 350

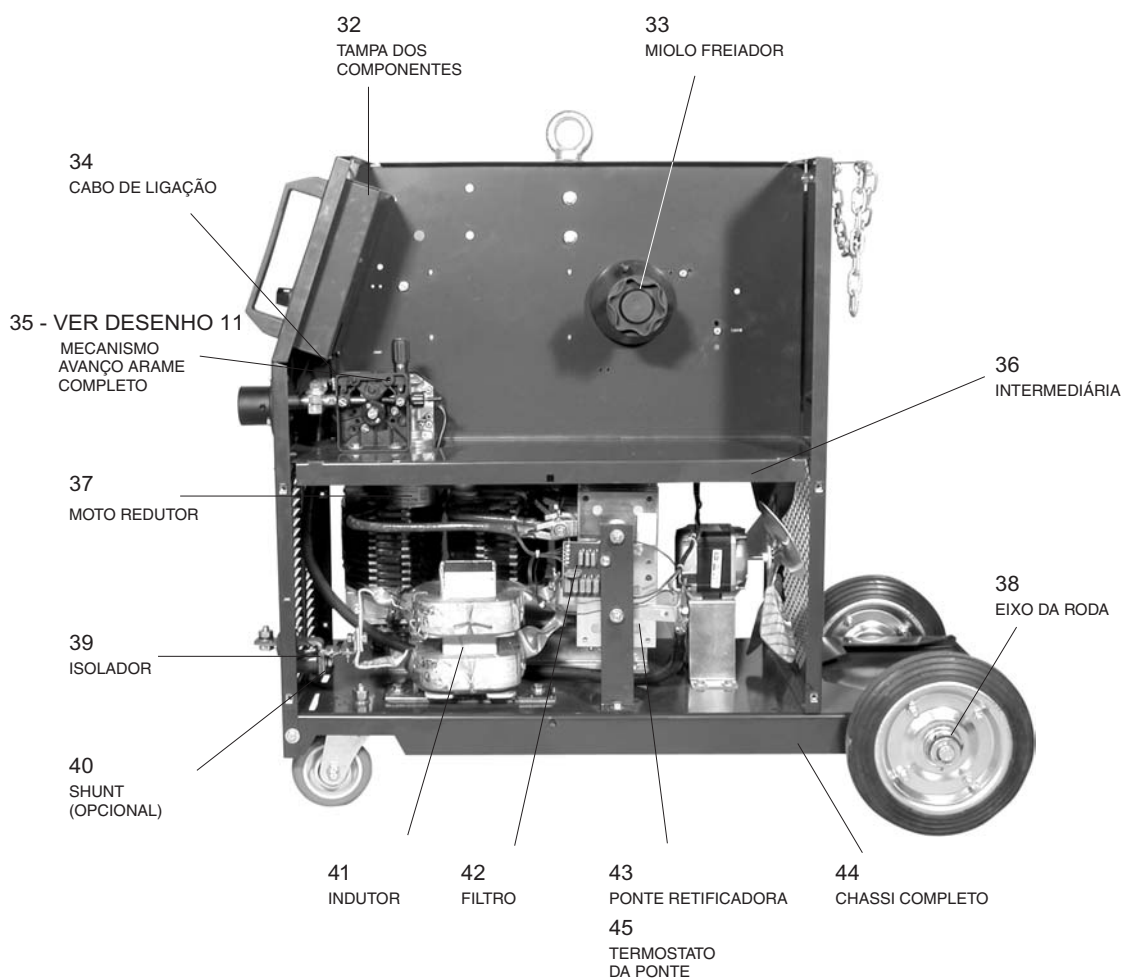
ELITE(31)33914769



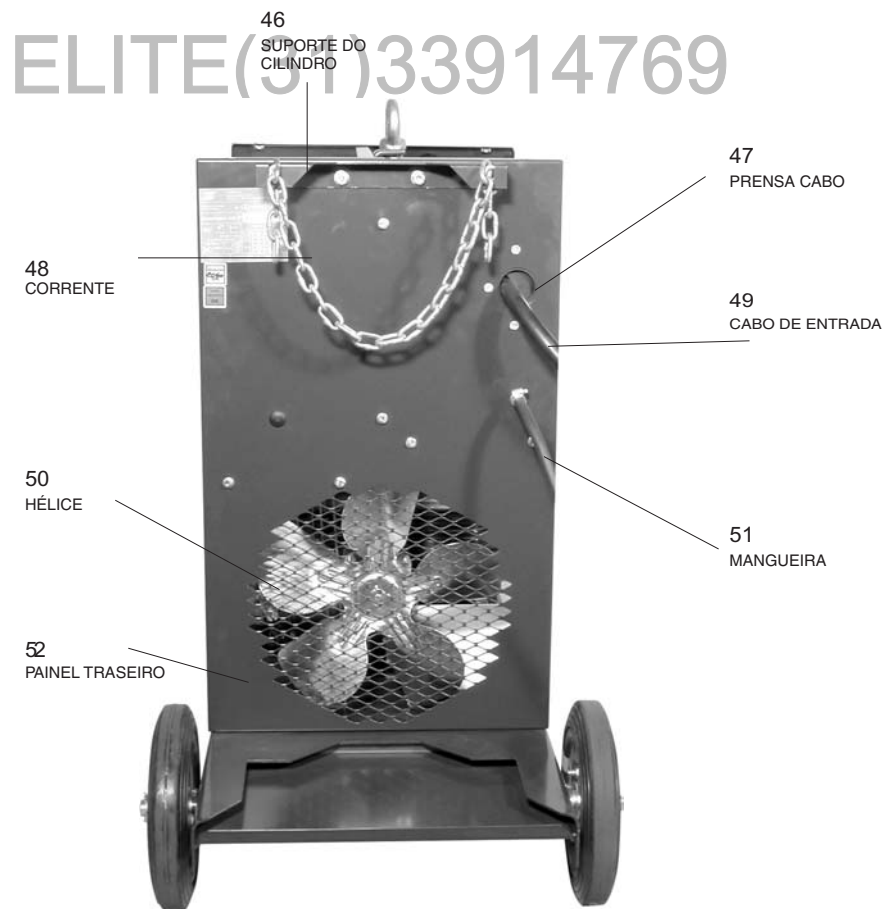
DESENHO B ELITE(31)33914769



ELITE(31)33914769

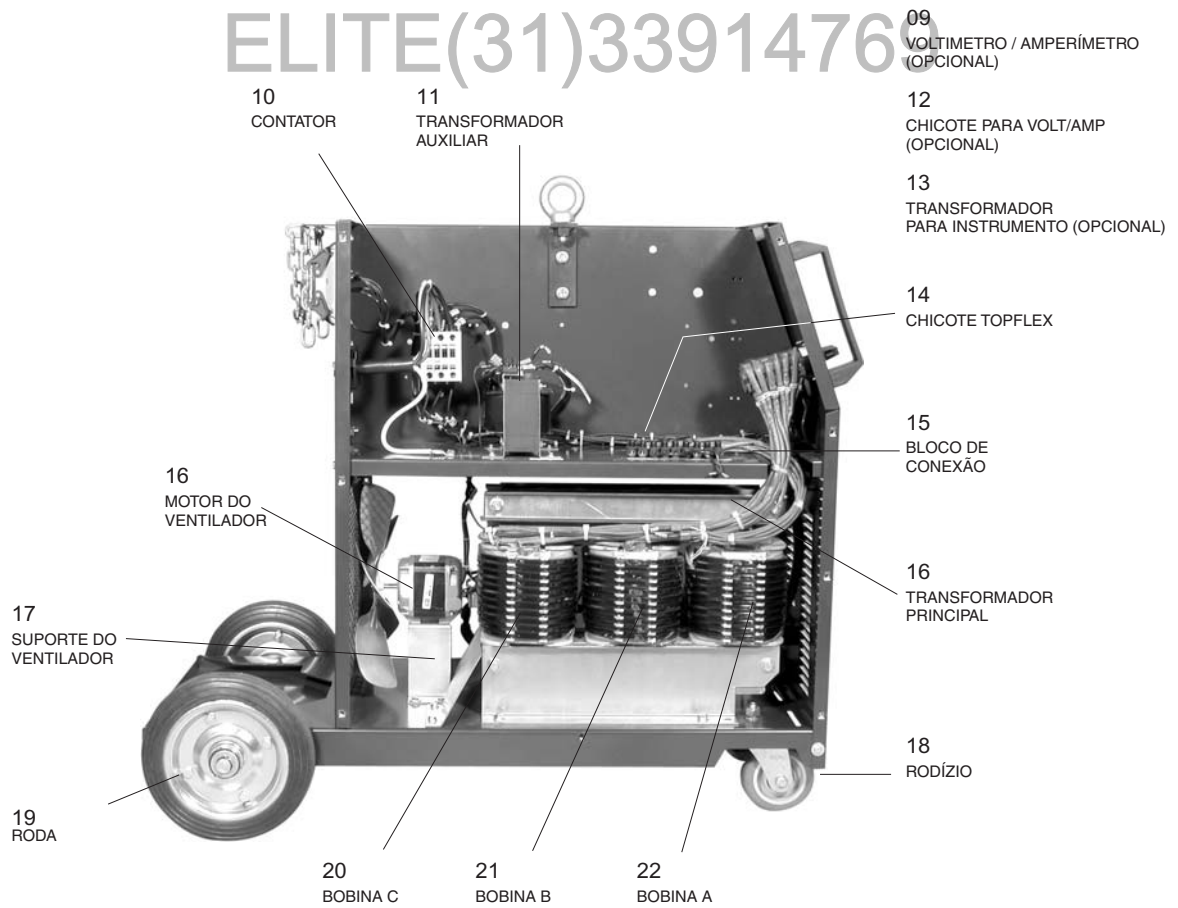


DESENHO C

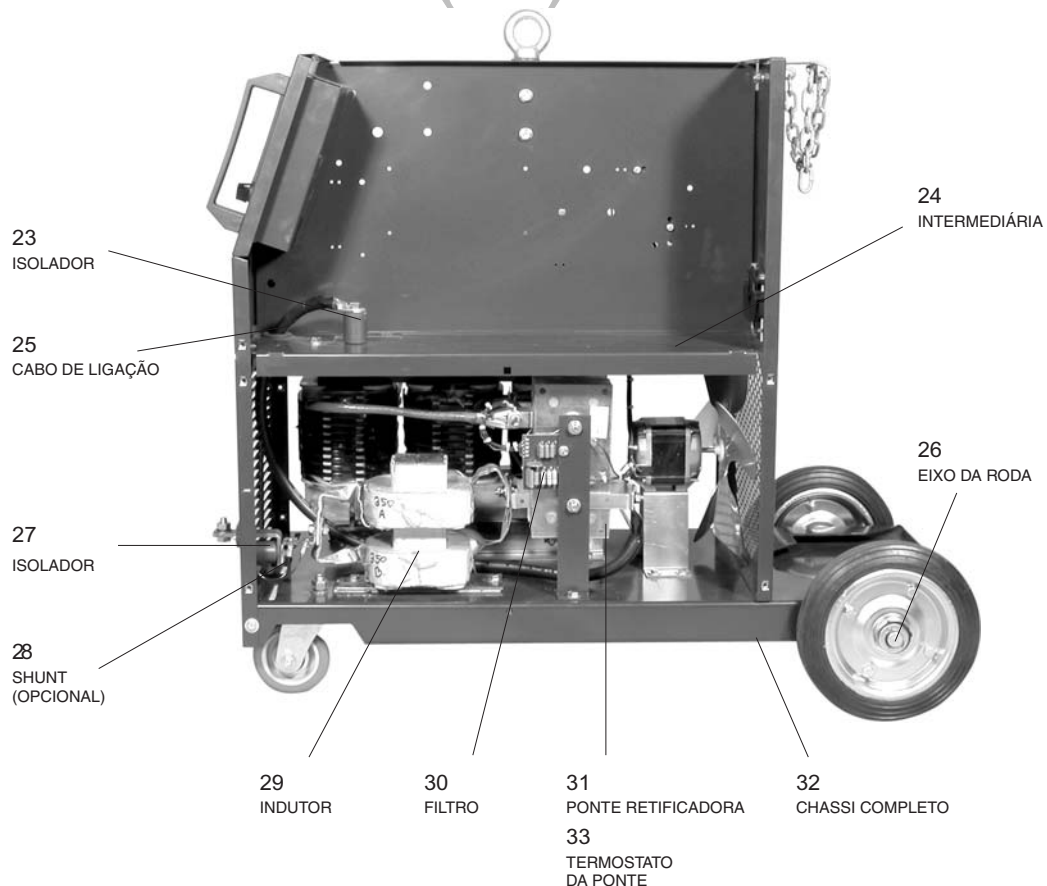


DESENHO B

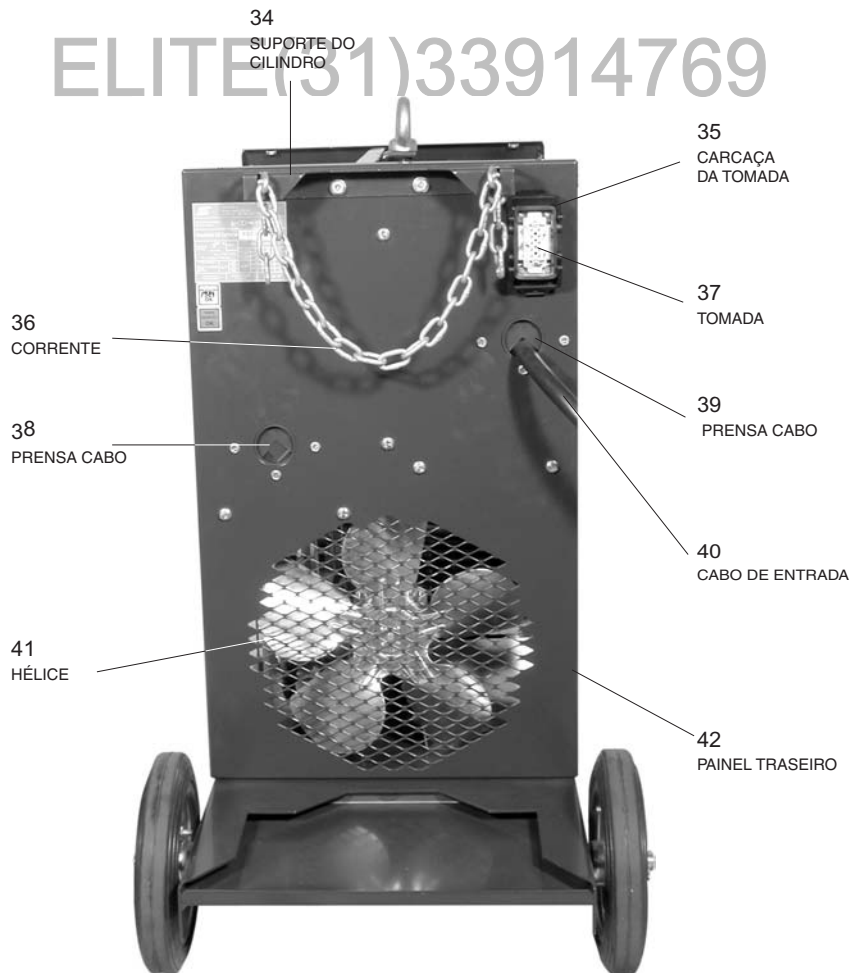
ELITE(31)33914768



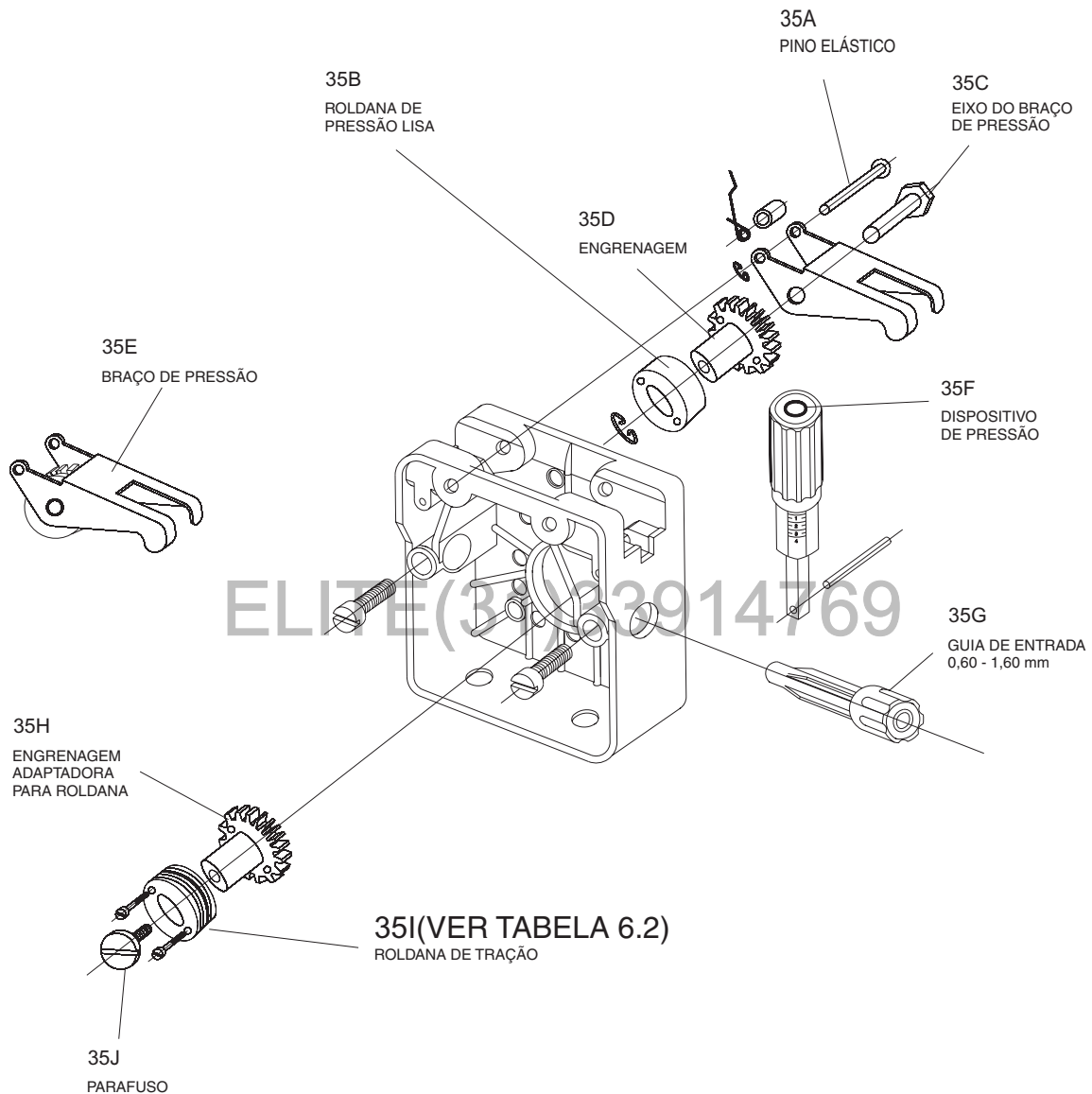
ELITE(31)33914769



DESENHO C



11) MECANISMO DE AVANÇO DE ARAME



12) ACESSÓRIOS

TABELA 12.1

Descrição	Referência
Kit Voltímetro/Amperímetro Digital	10
MEF 25	11
Conjunto de Cabos 400 A (2 metros) para Smashweld 350 Topflex	12
Conjunto de Cabos 400 A (10 metros) para Smashweld 350 Topflex	13
Conjunto de Cabos 400 A (15 metros) para Smashweld 350 Topflex	14
Conjunto de Cabos 400 A (20 metros) para Smashweld 350 Topflex	15
Tochas para Soldagem	
PMC 300 para arame até 1,2 mm	16
PMC 400 para arame até 1,6 mm	17

ELITE(31)33914769

TABELA 6.2

Tipo de Arame	diâmetro (mm)	Smashweld 350	MEF 25
Aços, sólidos	0,60 - 0,80	35IA	35IH
	0,80 - 1,00	35IB	35II
	1,00 - 1,20	35IC	35IJ
	1,20 - 1,60	35ID	35IL
Ligas de alumínio	1,00 - 1,20	35IE	35IM
	1,20 - 1,60	35IF	35IN
Tubular	1,20 - 1,60	35IG	35IO